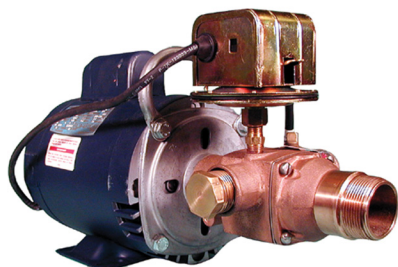




OBERDORFER®

An Ingersoll Rand Business

Model 406M Bronze Close Coupled Rubber Impeller Pump



OB406MK-04N26

Features

- All Bronze Construction
- Stainless Steel Shafts
- Portable
- Compact
- Easy Impeller Replacement
- Macerator Easily Replaced
- Reversible Wear Plate
- Vacuum Switch Shut-off Optional

General Description

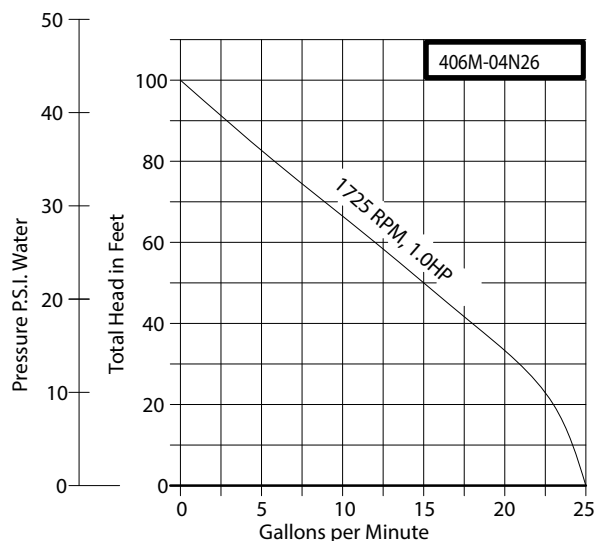
Close coupled Rubber Impeller Pumps are made of high quality bronze for maximum corrosion resistance. The rubber impeller is either directly attached to the stainless steel motor shaft or the impeller is mounted on a separate stainless steel shaft which is counterbored on the outer end in order to slide over the carbon steel motor shaft. Ball or sleeve bearings in the motor support the shaft. Model 406M has a mechanical seal. Impellers are made of Neoprene rubber, Buna N impellers are available on request.

Flexible blades on the periphery of the impeller provide the pumping action. While the impeller rotates, the liquid between the blades is continuously

squeezed out into the discharge port by a cam located inside the pumping chamber. The flow may be throttled or shut off for a short period without the need of a relief valve.

Performance

Capacity Water at 60°F



Drive Arrangement

Close coupled Rubber Impeller Pumps are mounted directly onto the electric motor without the standard motors with Nema C flange. It uses a bronze plate to accommodate the pump.

Liquids & Temperature

Liquids handled by Rubber Impeller Pumps with standard Neoprene impellers are primarily fresh or salt water and water solutions. Rubber Impeller Pumps are not suitable for pumping gasoline or solvents. Buna N impellers can handle oil contaminated water and kerosene at reduced impeller service life.

Liquid temperature range is from 40°F to 140°F. If freezing conditions are expected, the pump should be drained by loosening the cover screws and the pump chamber should be filled with antifreeze. Viscous liquids and oils can not be pumped with Rubber Impeller Pumps.

Suction Lift

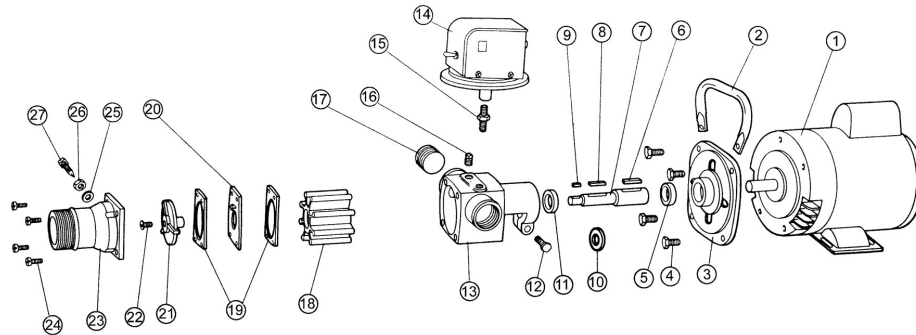
On initial start-up Rubber Impeller Pumps must be primed to prevent dry-running of the impeller. Suction lifts of 15 ft. are possible when pump is fully primed. A foot valve with built-in strainer at the beginning of the suction line is recommended. Suction lines should be as short as possible.



OBERDORFER®

An Ingersoll Rand Business

Exploded View and Parts List



	1	2	3	4	5	6	7	8	9	10	11	12	13	14	15	16	17	18	19
	Motor	Handle	Adapter	Screw	Collar	Key	Shaft	Key	Key	Washer	Seal Assy	Screw	Body	Vacuum Switch	Nipple	Pipe Plug	Pipe Plug	Impeller	Gasket
Pump No.	Qty. 1	Qty. 1	Qty. 1	Qty. 4	Qty. 1	Qty. 1	Qty. 1	Qty. 1	Qty. 1	Qty. 1	Qty. 1	Qty. 1	Qty. 1	Qty. 1	Qty. 1	Qty. 2	Qty. 1	Qty. 1	Qty. 2
OB406M-04	N/A	N/A	OB7459	OB5411	OB5886	OB6845	OB7519	OB5475	OB6947	OB6631	OB32230	OB5595	OB7040	N/A	N/A	OB7043	OB7189	OB6603	OB7188
OB406M-04N26	OB7055	OB9773	OB7459	OB5411	OB5886	OB6845	OB7519	OB5475	OB6947	OB6631	OB32230	OB5595	OB7040	N/A	N/A	OB7043	OB7189	OB6603	OB7188
OB406MK-04N26	OB7055	OB9773	OB7459	OB5411	OB5886	OB6845	OB7519	OB5475	OB6947	OB6631	OB32230	OB5595	OB7040	OB7046	OB7050	OB7043 See Note 1	OB7189	OB6603	OB7188
	20	21	22	23	24	25	26	27	28	29	30	31	32	33	34	35	36	* Repair Kits	
	Plate	Wheel	Screw	Cover	Screw	Washer	Jam Nut	Pick Screw	Screw, (Handle)	Washer, (Handle)	Power Cord	Terminal Ring	Wire Nut	Grommet	Cable Tie, 4"	Cable Tie, 7.5"	Switch Cord		
Pump No.	Qty. 1	Qty. 1	Qty. 1	Qty. 1	Qty. 4	Qty. 1	Qty. 1	Qty. 1	Qty. 2	Qty. 2	Qty. 1	Qty. 5	Qty. 2	Qty. 1	Qty. 1	Qty. 2	Qty. 1		
OB406M-04	OB7101	OB7075	OB6437	OB7100	OB8229	OB7255	OB7256	OB7258	N/A	N/A	N/A	N/A	N/A	N/A	N/A	N/A	N/A	OB10956	
OB406M-04N26	OB7101	OB7075	OB6437	OB7100	OB8229	OB7255	OB7256	OB7258	OB5974 See Note 2	OB6831 See Note 2	OB7044	N/A	OB9857	OB6650	OB3317	N/A	N/A	OB10956	
OB406MK-04N26	OB7101	OB7075	OB6437	OB7100	OB8229	OB7255	OB7256	OB7258	OB5974 See Note 2	OB6831 See Note 2	OB7044	OB3316	OB9857	OB6650	OB3317	OB3318	OB7047	OB10956	

¹ Items 28 - 34 are not shown on illustration. Five Required.

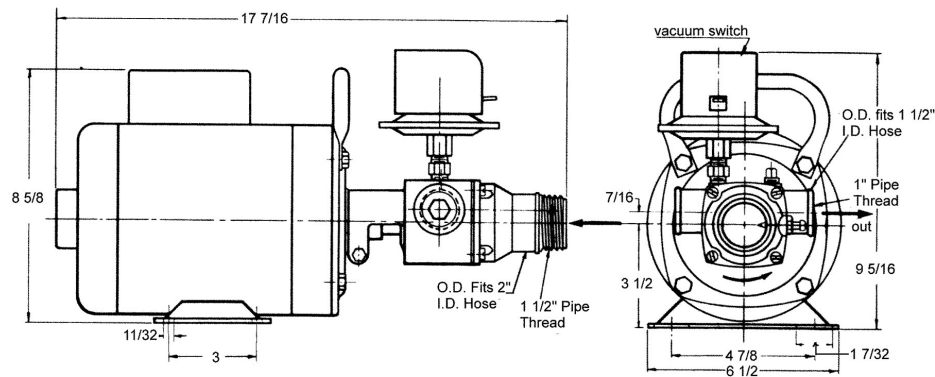
* Repair Kits contain items 11, 18 & 19.

Vacuum Switch Repair Kit is p/n OB10798. Kit contains items 14, 15, 31 & 36.

Note (1): When the pump string has a vacuum switch the Qty. for this part is 1.00..

Note (2): When the pump unit has a handle 2 of the OB5411 screws are replaced by OB5974 screws and OB6831 washers.

Dimensions



12500 South Pulaski Road
Alsip, IL 60803, USA
Phone (800) 448.1668